

# Daydream One Sheet Wonder



## Welcome!

Make 8 beautiful cards and a gift box quickly with this exclusive One Sheet Wonder template! The One Sheet Wonder technique is always a favorite. The simple genius comes from using a single stamped sheet of cardstock, cut into multiple pieces, to create a whole set of cards, 3-D projects, or scrapbook pages. This isn't an ordinary, cookie cutter, One Sheet Wonder - this tutorial will help you make detailed cards with accents and embellishments that make each card unique and something you'll be proud to send. With these 8 cards and a gift box you'll be prepared for a variety of occasions or a last minute gift!

### In this class, you will make:

- 8 Cards
- 1 Tag a Bag Gift Box

### This class includes:

- One Sheet Wonder Template
- Bonus Ideas
- Alternate Project Samples

### Featured Products:

- Daydream Medallions (#131976 wood, #126467 clear)
- Floral Frames Collection Framelits (#127012)
- Tag a Bag Gift Boxes (#130927)

### Featured Techniques:

- One Sheet Wonder, Framelits & Faux Fabric Flowers

**Thank you, and enjoy your tutorial!  
For questions and to purchase additional  
Stampin' Up! products, please contact me:**

# Supplies

Listed below are the supplies needed for the projects in this tutorial.

## Stamps

- Daydream Medallions (#131976 wood, #126467 clear)
- Four You (#130535 wood, #130538 clear)

## Ink

- Baked Brown Sugar Classic Stampin' Pad (#131174)
- Costal Cabana Classic Stampin' Pad (#131175)
- Crisp Cantaloupe Classic Stampin' Pad (#131176)
- Pistachio Pudding Classic Stampin' Pad (#131177)
- Strawberry Slush Classic Stampin' Pad (#131178)

## Paper

- Very Vanilla 8-1/2" x 11" Cardstock (#101650) – 2-1/10 sheets
- Baked Brown Sugar 8-1/2" x 11" Cardstock (#131296) – 1-2/3 sheets
- Costal Cabana 8-1/2" x 11" Cardstock (#131297) – 1 sheet
- Crisp Cantaloupe 8-1/2" x 11" Cardstock (#131298) – 4/5 sheet
- Pistachio Pudding 8-1/2" x 11" Cardstock (#131294) – 5/8 sheet
- Strawberry Slush 8-1/2" x 11" Cardstock (#131295) – 1-3/8 sheet

## Adhesives

- SNAIL Refill (#104331) – 120"/set
- Stampin' Dimensionals (#104430) – 37/set
- Glue Dots (#103683) – 25/set
- Sticky Strip (#104294) – 8"/set

## Consumable

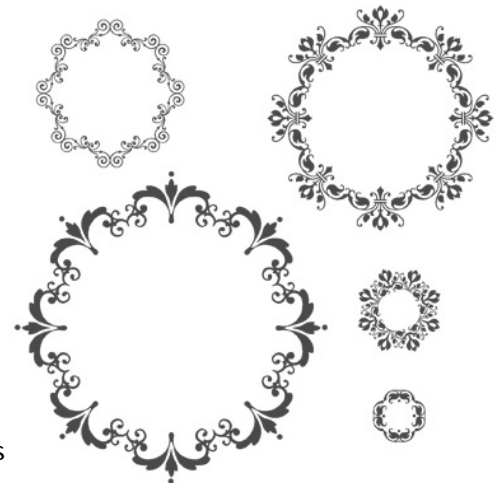
- In Color Boutique Details (#130938) - 5/set
- Basic Pearl Jewels (#119247) - 19/set
- Strawberry Slush 3/8" Ruffled Stretch Trim (#130023) - 13"/set
- Costal Cabana 3/8" Ruffled Stretch Trim (#130024) - 27"/set
- Baked Brown Sugar 3/8" Ruffled Stretch Trim (#130022) - 20"/set
- Tag a Bag Gift Boxes (#130927) – 1/set
- Medium Envelopes – Very Vanilla (#107300) – 8/set

## Tools

- Big Shot w/ Multipurpose Platform (#113439)
- Floral Frames Collection Framelits (#127012)
- Big Shot Magnetic Platform (#130658) (optional)
- Simply Scored Scoring Tool (#122334)
- Paper Snips (#103579)
- Paper Trimmer (#126889)
- Stamping Sponges (#101610)
- Sponge Daubers (#102892)

## Non-Stampin' Up!

- Spritz bottle with water

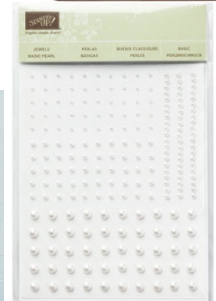


hello

Thank You

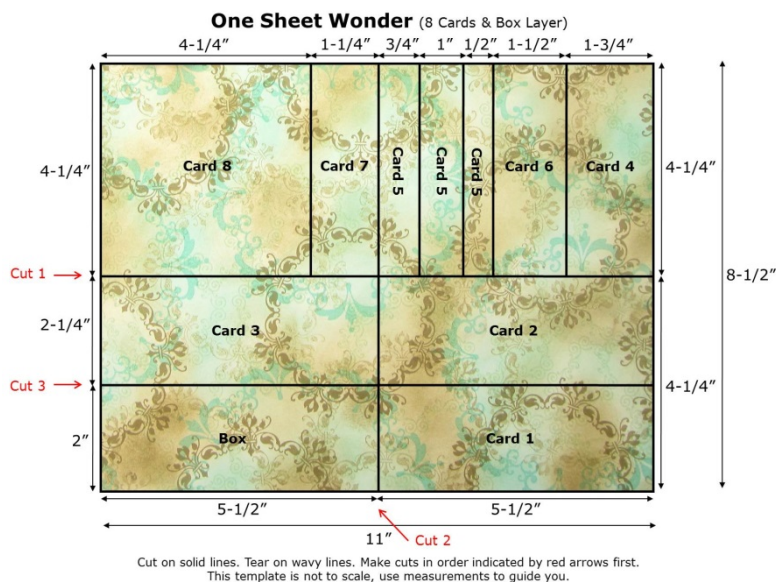
Birthday Wishes

Thinking of You



# Instructions

## Cutting Instructions



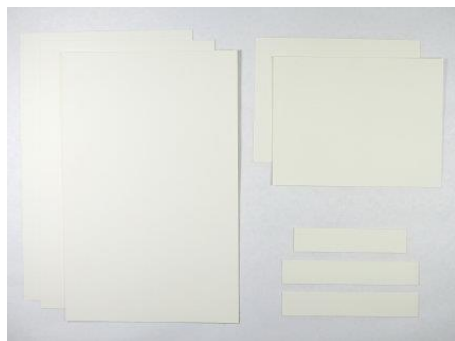
### **8-1/2" x 11" One Sheet Wonder:**

Cut the One Sheet Wonder following the template in the Templates section.

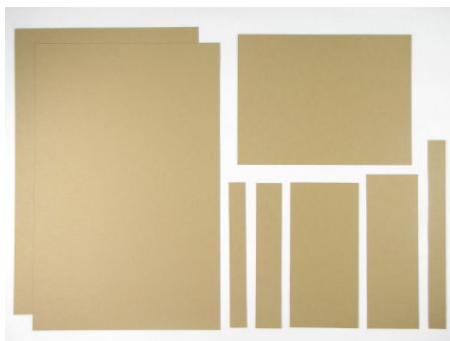
*1 sheet is cut following the One Sheet Wonder template in the Templates section to create the accent pieces for 8 cards and one box.*

For these projects, a single One Sheet Wonder (8-1/2" x 11") is enough to complete the set.

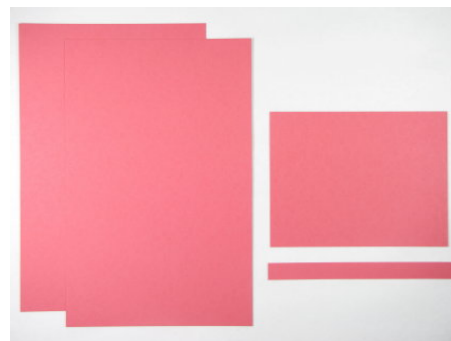
### **Cardstock Pieces**



Very Vanilla Cardstock Pieces



Baked Brown Sugar Cardstock Pieces



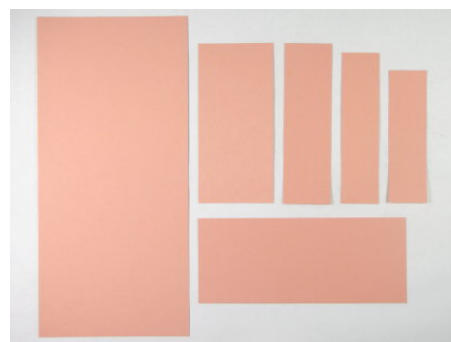
Strawberry Slush Cardstock Pieces



Pistachio Pudding Cardstock Pieces

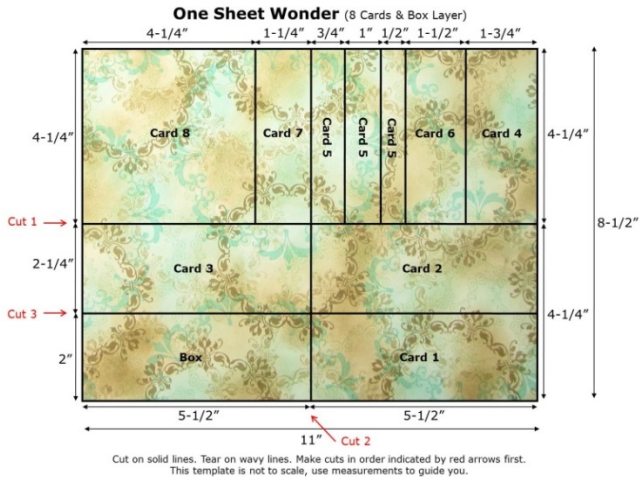


Costal Cabana Cardstock Pieces

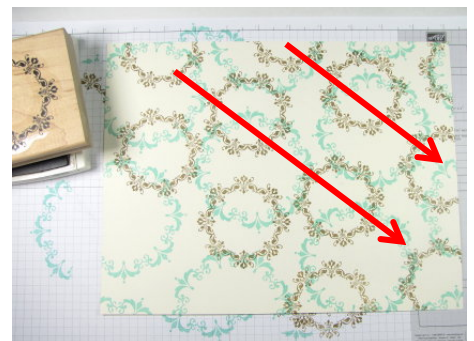
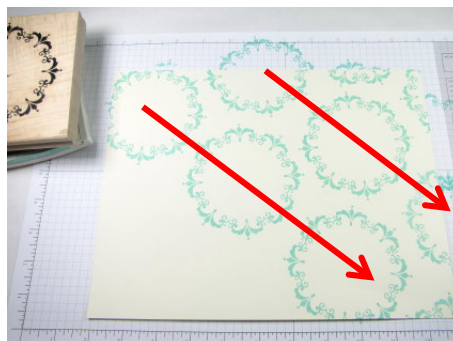
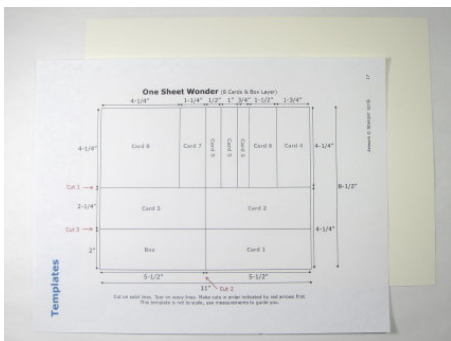


Crisp Cantaloupe Cardstock Pieces

# One Sheet Wonder Instructions



**Stamps:** Daydream Medallions  
**Ink:** Baked Brown Sugar, Costal Cabana & Pistachio Pudding  
**Very Vanilla Cardstock**  
 1 8-1/2" x 11" – Cards 1-8 & Box  
**Other**  
 Sponge Daubers  
 Paper Trimmer



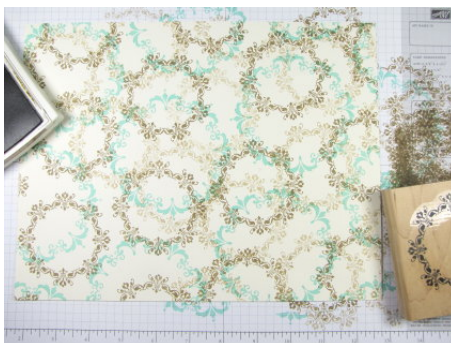
1. Gather supplies listed.

2. Completely cover the 8-1/2" x 11" Very Vanilla cardstock with stamping using the largest image from the Daydream Medallions stamp set and Costal Cabana ink.

3. Stamp the second largest Daydream Medallions image over the full sheet using Baked Brown Sugar ink.

Stamp somewhat between and overlapping the first layer of stamped images.

Create an "organized random" pattern by stamping in diagonal rows. Stamp off the edge of the paper, too.



4. Fill in some of the blank areas with this next lighter layer of stamping. Again, stamp using the second largest Daydream Medallions image. Each time you ink the stamp with Baked Brown Sugar ink, stamp it off once on scrap paper before stamping on the One Sheet Wonder.

5. Continue filling in any blank areas with the third largest Daydream Medallions image stamped using Pistachio Pudding ink.

6. The stamped sheet will look somewhat like this close up photo, but each sheet will turn out differently.



7. Sponge random areas of the background with a Sponge Dauber and Baked Brown Sugar ink. Use a circular motion.

**NOTE:** Think of sponging the background like creating the spots on a leopard or camouflage. Create random patterns and shapes that are similar in size and color.

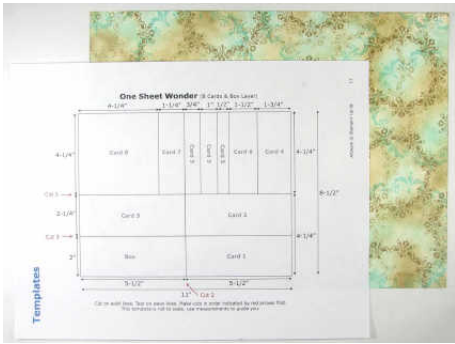


8. Sponge the remaining areas of the background with a Sponge Dauber and Costal Cabana ink. Blend into the Baked Brown Sugar sponged areas.



9. Add in more Baked Brown Sugar sponging if you wish.

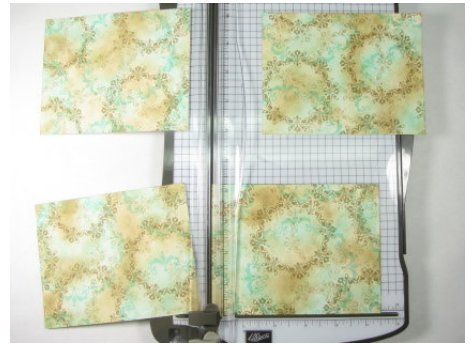
Remember, this sheet will be cut up into smaller pieces so you won't see the overall pattern. Don't stress about making it perfect!



10. Cut the stamped and sponged One Sheet Wonder according to the template.



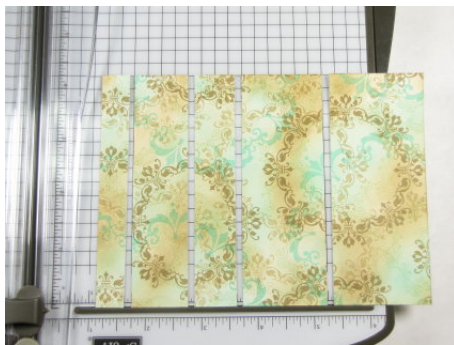
11. Follow the first cutting arrows to cut the paper in half at 4-1/4" along the 8-1/2" side.



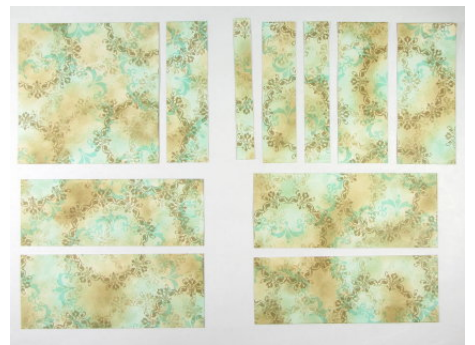
12. Follow the second cutting arrow to cut the two halves in half at 5-1/2" along the 11" sides.



13. Follow the third cutting arrow to cut two of the halves into 2" and 2-1/4" wide sections along the 4-1/4" sides.



14. Cut the two remaining quarters according to the measurements on the template.



15. These One Sheet Wonder pieces will be used to create 8 cards and 1 box.

**TIP:** Write card number or box shown on template on the back of each One Sheet Wonder piece to help you keep track.

# Card Prep Instructions



**Stamps:** Daydream Medallions

**Ink:** Baked Brown Sugar, Costal Cabana, Pistachio Pudding, Strawberry Slush & Crisp Cantaloupe

**Very Vanilla Cardstock**

2 5-1/2" x 8-1/2" – Cards 2 & 6

1 3-7/8" x 5-1/8" – Card 7

Scrap for die-cutting (about 5-1/2" x 8-1/2") – Card 3

**Baked Brown Sugar Cardstock**

Scrap for die-cutting (about 2" x 4-1/4") – Cards 2 & 5

**Crisp Cantaloupe Cardstock**

Scrap for die-cutting (about 4" x 8-1/2") – Cards 1, 4, 7, 8 & Box

**Strawberry Slush Cardstock**

1 5-1/2" x 8-1/2" – Card 4

Scrap for die-cutting (about 5-1/2" x 8-1/2") – Cards 3, 4, 7, 8 & Box

**Costal Cabana Cardstock**

1 4-1/4" x 11" – Card 8 & Box

**Other**

Big Shot & Floral Frames Collection Framelits

Stamp-a-ma-jig (optional)



1. Gather supplies listed.

Score 5-1/2" x 8-1/2" Very Vanilla (2) and Strawberry Slush card bodies at 4-1/4" along the 8-1/2" side. Score Costal Cabana 4-1/4" x 11" card body at 5-1/2" along the 11" side.



2. Stamp second smallest image from Daydream Medallions stamps set twice on scrap Crisp Cantaloupe with same color ink.

Die cut both stamped images and 2 un-stamped flowers from the Crisp Cantaloupe cardstock using the corresponding Floral Frames Collection Framelit.



3. Clean stamp and then stamp once onto scrap Strawberry Slush cardstock with Strawberry Slush ink.

Die cut stamped image.

With the same die, cut out 2 un-stamped flowers from scrap Baked Brown Sugar Cardstock.



4. Stamp the image onto the Strawberry Slush card body using Strawberry Slush ink.

Stamp repeatedly to create 2 rows of the image. Place one row next to the left edge of the card front. Place the right edge of the second row near the center of the card front.



5. Stamp third largest image from Daydream Medallions stamp set once on scrap Strawberry Slush with Strawberry Slush ink.

Die cut stamped image and 2 un-stamped flowers from the Strawberry Slush cardstock using the corresponding Floral Frames Collection Framelit.



6. Clean stamp and then stamp once onto scrap Very Vanilla cardstock with Pistachio Pudding ink.

Die cut stamped image with corresponding Floral Frames Collection Framelit.



7. Stamp second largest image from the Daydream Medallions stamp set once on scrap Crisp Cantaloupe scrap cardstock and once on Strawberry Slush scrap cardstock with Baked Brown Sugar ink.

Die cut both stamped images using the corresponding Floral Frames Collection Framelit.



10. Place the other Very Vanilla card body in the portrait position.

Stamp the same image slightly above center along the left edge with Baked Brown Sugar ink. Place the left edge of the stamp part on/part off the left edge so the entire blank inner area is on the card front.



13. Stamp same image on scrap Very Vanilla cardstock with Costal Cabana ink.

Die cut stamped image using the corresponding Floral Frames Collection Framelit.



8. Place the 3-7/8" x 5-1/8" Very Vanilla cardstock in the portrait position.

Stamp the same image slightly to the right of center along the top edge with Baked Brown Sugar ink. Place the stamp so the center petals are on the cardstock and the top 1/3 of the image is off the top edge.



11. Stamp largest image from the Daydream Medallions stamp set centered over the Baked Brown Sugar stamped image using Costal Cabana ink.

**TIP:** Use the Stamp-a-ma-jig to center the largest image neatly over the first stamped image.



14. The supply lists for each card and the box list which stamped and die cut pieces are used for that project. Set aside the pieces until they are needed.



9. Place a Very Vanilla card body in the landscape position.

Stamp the same image slightly above center along the left edge with Baked Brown Sugar ink. Stamp off once on scrap paper to get a lighter image. Place stamp so center petals are on the card and left 1/3 of the image is off the card front.

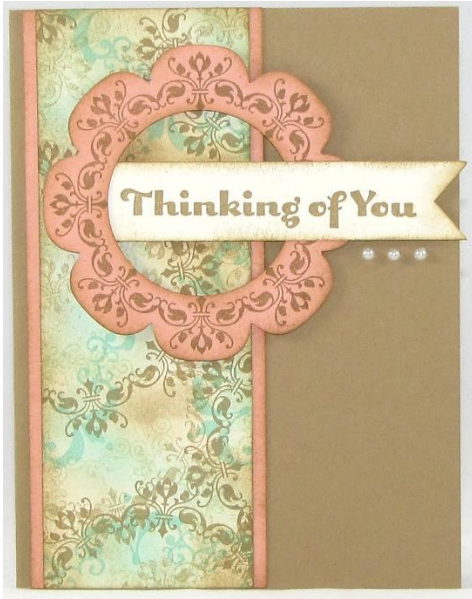


12. Place Costal Cabana card front in portrait position. Stamp the same image with Costal Cabana ink. Center stamp side-to-side and about 1/2" below top edge.

Die cut center of stamped image using second largest Floral Frames Framelit. Be sure card body is open when die cutting.

Keep die cut flower for box.

## Card 1 Instructions



**Stamps:** Four You

**Ink:** Baked Brown Sugar

**One Sheet Wonder**

1 2" x 5-1/2" – Card 1

**Pre-stamped and/or die-cut pieces**

1 Die-cut & stamped Crisp Cantaloupe 3" flower – Card 1

**Very Vanilla Cardstock**

1 3/4" x 4-1/4" – Card 1

**Baked Brown Sugar Cardstock**

1 5-1/2" x 8-1/2" – Card 1

**Crisp Cantaloupe Cardstock**

1 2-1/4" x 5-1/2" – Card 1

**Other**

Basic Pearl Jewels (3 medium)

1-3/4" Circle Punch

Stamping Sponge

Stamp-a-ma-jig (optional)

Adhesives: SNAIL (14"), Glue Dots (1) & Stampin' Dimensionals (6)



1. Gather supplies listed.

Score 5-1/2" x 8-1/2" Baked Brown Sugar cardstock at 4-1/4" along the 8-1/2" side.



2. Stamp greeting from the Four You stamp set onto the Very Vanilla cardstock strip using Baked Brown Sugar ink. Banner cut the right edge of the strip.



3. Punch out center of Crisp Cantaloupe die cut 3" flower with 1-3/4" Circle punch.

**TIP:** Use the Stamp-a-ma-jig to center the greeting on the strip.



4. Sponge edges of greeting banner, 3" die cut flower, Crisp Cantaloupe cardstock strip and One Sheet Wonder piece with a Stamping Sponge and Baked Brown sugar ink.



5. Layer One Sheet Wonder piece on Crisp Cantaloupe strip. Adhere to card near left edge.

Weave greeting strip through the hole in the 3" flower. Adhere left edge of greeting behind flower with a Glue Dot. Trim off left edge if banner is too long.



6. Add Stampin' Dimensionals behind flower and greeting strip. Adhere about 1/2" below top edge of card front.

Place 3 medium sized Pearl Jewels in a row just under the right edge of the greeting strip.



## Card 2 Instructions



**Stamps:** Four You

**Ink:** Baked Brown Sugar

**One Sheet Wonder**

1 2-1/4" x 5-1/2" – Card 2

**Pre-stamped and/or die-cut pieces**

1 Stamped Very Vanilla 5-1/2" x 8-1/2" – Card 2

1 Die-cut Baked Brown Sugar 1" flower – Card 2

**Very Vanilla Cardstock**

1 3/4" x 4-1/4" – Card 2

**Baked Brown Sugar Cardstock**

1 1/2" x 5-1/2" – Card 2

1 3/4" x 4-1/4" – Card 2

**Pistachio Pudding Cardstock**

1 3/4" x 4-1/4" – Card 2

**Other**

In Color Boutique Details (1 Pistachio Pudding)

Stamping Sponge

Stamp-a-ma-jig (optional)

Adhesives: SNAIL (14"), Glue Dots (4) & Stampin' Dimensionals (1)



1. Gather supplies listed.

Card body is pre-stamped and pre-scored.



2. Stamp greeting from the Four You stamp set 1/2" from right edge of Very Vanilla cardstock strip using Baked Brown Sugar ink. Banner cut right edge of the strip and the 3/4" wide Baked Brown Sugar and Pistachio Pudding strips.

**TIP:** Use the Stamp-a-ma-jig to center the greeting on the strip.



3. Sponge edges of all 3 strips and the Baked Brown Sugar die cut flower with a Stamping Sponge and Baked Brown Sugar ink.

Fan out banner cut strips. Adhere greeting strip on top with a Stampin' Dimensional at the right end. Cut corners off layered left edge so they fit neatly behind die cut flower.



4. Adhere 1/2" x 5-1/2" Baked Brown Sugar cardstock strip behind top edge of One Sheet Wonder layer behind top edge of One Sheet Wonder leaving about 1/8" showing. Adhere to bottom of card front with the Baked Brown Sugar strip towards the center of the card front.



5. Adhere banners to card front with Glue Dots. Place over top edge of One Sheet Wonder layer with flower is slightly off the left edge, and centered in stamped background image. Trim flower even with left edge of card front or allow it to hang over a bit.



6. Adhere Pistachio Pudding Boutique Details embellishment on die cut flower with Glue Dots.

## Card 3 Instructions



**Stamps:** Four You

**Ink:** Baked Brown Sugar & Strawberry Slush

**One Sheet Wonder**

1 2-1/4" x 5-1/2" – Card 3

**Pre-stamped and/or die-cut pieces**

1 Die-cut & stamped Very Vanilla 4" flower – Card 3

1 Die-cut & stamped Strawberry Slush 3" flower – Card 3

1 Die-cut & stamped Very Vanilla 2" flower – Card 3

**Strawberry Slush Cardstock**

1 1/2" x 5-1/2" – Card 3

**Crisp Cantaloupe Cardstock**

1 1" x 3-1/2" – Card 3

**Pistachio Pudding Cardstock**

1 5-1/2" x 8-1/2" – Card 3

**Other**

Basic Pearl Jewels (3 medium)

Stamping Sponge

Stamp-a-ma-jig (optional)

Adhesives: SNAIL (14") & Stampin' Dimensionals (8)



1. Gather supplies listed.

Score 5-1/2" x 8-1/2" Pistachio Pudding cardstock at 4-1/4" along the 8-1/2" side.

2. Stamp greeting from the Four You stamp set centered on Crisp Cantaloupe cardstock strip using Strawberry Slush ink. Banner cut both ends of the strip.

3. Adhere 1/2" x 5-1/2" Strawberry Slush cardstock strip behind top edge of One Sheet Wonder piece leaving about 1/8" showing.

**TIP:** Use the Stamp-a-ma-jig to center the greeting on the strip.



4. Use Baked Brown Sugar ink and a Stamping Sponge to sponge edges of banner, 3 die cut flowers, and Strawberry Slush layer on the One Sheet Wonder.

Adhere One Sheet Wonder layer to bottom of card front with the Strawberry Slush strip towards the center of the card front.

5. Layer the 3 die cut flowers centered on each other with Stampin' Dimensionals. Adhere to left edge of card front with Stampin' Dimensionals.

Adhere greeting banner off the right edge of the smallest flower using SNAIL on the left edge of banner and a Stampin' Dimensional on the right edge.

6. Place 3 medium sized Pearl Jewels in a row just above the Strawberry Slush strip at the right edge of the card front.

## Card 4 Instructions

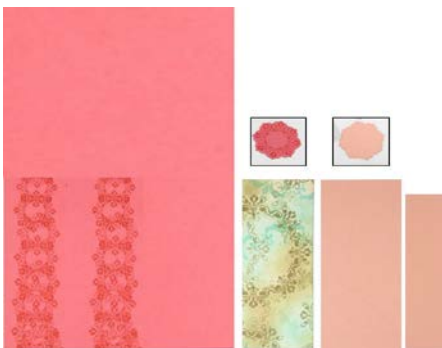


**Stamps:** Four You  
**Ink:** Strawberry Slush  
**One Sheet Wonder**  
 1 1-3/4" x 4-1/4" – Card 4

**Pre-stamped and/or die-cut pieces**  
 1 Stamped Strawberry Slush 5-1/2" x 8-1/2" – Card 4  
 1 Die-cut & stamped Strawberry Slush 1" flower – Card 4  
 1 Die-cut Crisp Cantaloupe 1" flower – Card 4

**Crisp Cantaloupe Cardstock**  
 1 2" x 4-1/4" – Card 4  
 1 1" x 4" – Card 4

**Other**  
 In Color Boutique Details (1 Crisp Cantaloupe)  
 3/8" Strawberry Slush Ruffle Stretch Trim (4")  
 Stamp-a-ma-jig (optional)  
 Adhesives: SNAIL (22") & Glue Dots (2)



1. Gather supplies listed.

Card body is pre-stamped and pre-scored.

2. Stamp greeting from the Four You stamp set towards right edge of Crisp Cantaloupe cardstock strip using Strawberry Slush ink. Banner cut right end of the strip.

**TIP:** Use the Stamp-a-ma-jig to center the greeting on the strip.

3. Adhere 2" wide Crisp Cantaloupe cardstock strip behind One Sheet Wonder piece.

Add SNAIL along the back of one long edge of Crisp Cantaloupe Strip. Adhere flat edge of 4" long Strawberry Slush Ruffle Stretch Trim under edge of cardstock. Stretch the trim to fit.



4. Adhere layers to card front with SNAIL so the ribbon is on the left side and the strip is centered between the two rows of stamped medallions.

5. Adhere Crisp Cantaloupe die cut flower rotated behind stamped and die cut Strawberry Slush flower.

Adhere Crisp Cantaloupe Boutique Details embellishment on flower with Glue Dots.

6. Adhere left edge of greeting banner behind die cut flowers. Adhere with SNAIL towards bottom of card front. Place flower off centered towards left edge of One Sheet Wonder Strip.

## Card 5 Instructions



**Stamps:** Four You  
**Ink:** Baked Brown Sugar  
**One Sheet Wonder**

- 1 1" x 4-1/4" – Card 5
- 1 3/4" x 4-1/4" – Card 5
- 1 1/2" x 4-1/4" – Card 5

**Pre-stamped and/or die-cut pieces**

- 1 Die-cut Baked Brown Sugar 1" flower – Card 5

**Very Vanilla Cardstock**

- 1 4" x 5-1/4" – Cards 5

**Baked Brown Sugar Cardstock**

- 1 3-7/8" x 5-1/8" – Card 5

**Costal Cabana Cardstock**

- 1 4-1/4" x 11" – Card 5

**Other**

In Color Boutique Details (1 Costal Cabana)

3/8" Costal Cabana Ruffle Stretch Trim (1")

Stamping Sponge

Stamp-a-ma-jig (optional)

Adhesives: SNAIL (18") & Glue Dots (2) & Stampin' Dimensionals (7)



1. Gather supplies listed.

Score 4-1/4" x 11" Costal Cabana cardstock at 5-1/2" along the 11" side.



2. Stamp greeting from the Four You stamp set at bottom right corner of the Baked Brown Sugar cardstock using Baked Brown Sugar ink.

**TIP:** Use the Stamp-a-ma-jig to center the greeting on the strip.



3. Sponge edges of stamped cardstock and die cut flower with Baked Brown Sugar ink.

Adhere Costal Cabana Boutique Detail to flower with Glue Dots.

Banner cut ends of all 3 One Sheet Wonder strips.



4. Add 1" of SNAIL along the back left edge of the 1" wide One Sheet Wonder strip starting 1/4" from the top edge. Adhere flat edge of 1" piece of Costal Cabana Ruffle trim under the strip so the ruffle peeks out the left side.



5. Adhere 1" strip to top left of Baked Brown Sugar layer using Stampin' Dimensionals. Place so ruffle just inside cardstock edge.

Adhere 3/4" and 1/2" strips to right of 1" strip with Stampin' Dimensionals. Move each strip up 1/2" for shorter banners.



6. Adhere Baked Brown Sugar layer onto Very Vanilla Layer. Center layers on card front.

Adhere flower with Boutique Detail onto 1" strip above the ribbon ruffle using Glue Dots.

## Card 6 Instructions



**Stamps:** Four You

**Ink:** Baked Brown Sugar

**One Sheet Wonder**

1 1-1/2" x 4-1/4" – Card 6

**Pre-stamped and/or die-cut pieces**

1 Stamped Very Vanilla 5-1/2" x 8-1/2" - Card 6

**Baked Brown Sugar Cardstock**

1 1/2" x 4-1/4" – Card 6

**Other**

Basic Pearl Jewels (12 small)

3/8" Costal Cabana Ruffle Stretch Trim (4")

3/8" Baked Brown Sugar Ruffle Stretch Trim (4")

Stamping Sponge

Stamp-a-ma-jig (optional)

Adhesives: SNAIL (12") & Sticky Strip (4-1/4")



1. Gather supplies listed.

Card body is pre-stamped and pre-scored.



2. Ink "hello" greeting from Four You stamp set with Baked Brown Sugar ink. Stamp off once on scrap paper. Stamp at an angle inside stamped medallion image on the Very Vanilla card front.

**TIP:** Use the Stamp-a-ma-jig to center the greeting on the strip.



3. Adhere 1/2" Baked Brown Sugar strip behind bottom edge of One Sheet Wonder piece. Adhere 1/8" above bottom edge of card.

Place Sticky Strip across card front above top of One Sheet Wonder piece. Peel off backing.



4. Stretch 4" piece of Costal Cabana Ruffled Stretch Trim across the card front with the ruffle pointing down towards the bottom of the card. Adhere the flat edge of the ribbon vertically across the bottom half of the Sticky Strip.



5. Stretch 4" piece of Baked Brown Sugar Ruffled Stretch Trim across card front with the ruffle pointing up. Adhere flat edge over the top of the flat edge of the Costal Cabana Stretch Trim. Press ruffle firmly down onto Sticky Strip. Add a bit of SNAIL or Mini Glue Dots behind edges of ribbon if they want to pull up.



6. Place small Pearl Jewels on the dots at the outside of the stamped Costal Cabana medallion image and the inside of the Baked Brown Sugar medallion image.

**TIP:** Use tips of Paper Snips or Paper-Piercing Tool to help lift and place the tiny self-adhesive pearls.

## Card 7 Instructions



**Stamps:** Four You

**Ink:** Baked Brown Sugar

**One Sheet Wonder**

1 1-1/4" x 4-1/4" – Card 7

**Pre-stamped and/or die-cut pieces**

1 Stamped Very Vanilla 3-7/8" x 5-1/8" – Card 7

1 Die-cut Strawberry Slush 2" flower – Card 7

1 Die-cut & stamped Crisp Cantaloupe 1" flower – Card 7

**Baked Brown Sugar Cardstock**

1 5-1/2" x 8-1/2" – Card 7

1 1-1/2" x 4-1/2" – Card 7

**Strawberry Slush Cardstock**

1 4" x 5-1/4" – Card 7

**Other**

In Color Boutique Details (1 Baked Brown Sugar)

3/8" Strawberry Slush Ruffle Stretch Trim (4-1/2")

Stamping Sponge

Stamp-a-ma-jig (optional)

Adhesives: SNAIL (28") & Glue Dots (2)



1. Gather supplies listed.

Score 5-1/2" x 8-1/2" Baked Brown Sugar cardstock at 4-1/4" along the 8-1/2" side.

2. Stamp greeting from Four You stamp set at bottom right corner of Very Vanilla cardstock layer using Baked Brown Sugar ink. (Medallion at the top).

Sponge edges of cardstock with a Stamping Sponge and Baked Brown Sugar ink.

**TIP:** Use the Stamp-a-ma-jig to center the greeting on the strip.

3. Banner cut end of One Sheet Wonder piece. Adhere to Baked Brown Sugar strip with top edges even. Cut Baked Brown Sugar strip to match banner cut.

Add SNAIL to back left side of banner. Adhere flat edge of 4" Strawberry Slush Ruffle Trim under banner with. Trim ribbon so backing isn't visible.



4. Adhere banner 1/4" from left edge of Very Vanilla cardstock layer with SNAIL. Layer onto Strawberry Slush cardstock, then center layers on card front.

Sponge edges of petals and 1" Crisp Cantaloupe flower with Baked Brown Sugar ink.



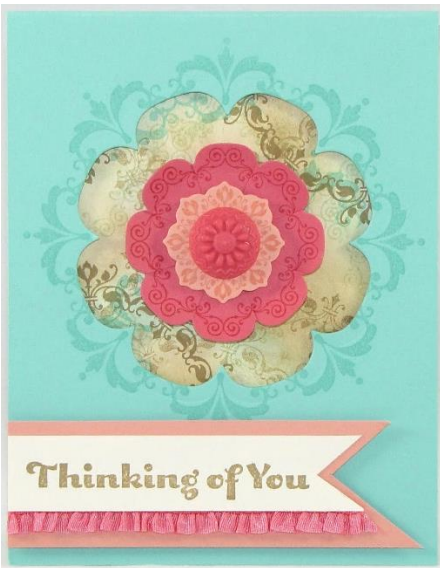
5. Cut 2" Strawberry Slush flower petals apart in wedges, like a pie. Cut point off the petals. Cover back of 1" flower with SNAIL. Add cut flower petals behind 1" flower one at a time in a spiral pattern. Add SNAIL to back of flower as needed.



6. Generously add SNAIL to back of petals and adhere to card front somewhat centered in stamped medallion on Very Vanilla layer.

Adhere Baked Brown Sugar Boutique Detail to center of flower with Glue Dots.

## Card 8 Instructions



**Stamps:** Four You  
**Ink:** Baked Brown Sugar  
**One Sheet Wonder**

1 4-1/4" x 4-1/4" – Card 8

**Pre-stamped and/or die-cut pieces**

1 Die-cut & stamped Costal Cabana 4-1/4" x 11" – Card 8

1 Die-cut & stamped Strawberry Slush 2" flower – Card 8

1 Die-cut & stamped Crisp Cantaloupe 1" flower – Card 8

**Very Vanilla Cardstock**

1 3/4" x 3-1/2" – Card 8

**Crisp Cantaloupe Cardstock**

1 1-1/4" x 4-1/4" – Card 8

**Other**

In Color Boutique Details (1 Strawberry Slush)

3/8" Strawberry Slush Ruffle Stretch Trim (3-1/2")

Stamp-a-ma-jig (optional)

Adhesives: SNAIL (8"), Glue Dots (2) & Stampin' Dimensionals (12)



1. Gather supplies listed.

Card body is pre-stamped and pre-scored.



2. Stamp greeting from Four You stamp set towards left edge of Very Vanilla cardstock strip using Baked Brown Sugar ink.

Banner cut right end of strip.

**TIP:** Use the Stamp-a-ma-jig to center the greeting on the strip.



3. Place SNAIL behind bottom edge of stamped greeting. Place flat edge of Strawberry Slush ribbon under edge and adhere. Trim ends to fit.

Adhere with greeting and ribbon centered on Crisp Cantaloupe cardstock strip with SNAIL.



4. Banner cut end of Crisp Cantaloupe strip to match. One banner point will be longer than the other because of the ribbon.

Adhere to bottom left of card front with Stampin' Dimensionals.



5. Place a Stampin' Dimensionals on the front corners of the One Sheet Wonder piece. Place Stampin Dimensionals inside card front at top, bottom, and left edge of the flower window. Adhere layer inside card front under the die cut window.



6. Snip 1/2" deep between each petal of 2" flower. Curl edges up with fingers or Bone Folder. Use a Stampin' Dimensional to add 1" flower and adhere flowers centered in die cut window.

Add Strawberry Slush Boutique Details embellishment to the center of flower with Glue Dots.

## Box Instructions



**Stamps:** Four You

**Ink:** Baked Brown Sugar

**One Sheet Wonder**

1 2" x 5-1/2" – Box

**Pre-stamped and/or die-cut pieces**

1 Die-cut Costal Cabana 3" flower – Box

1 Die-cut Strawberry Slush 2" flower – Box

1 Die-cut Crisp Cantaloupe 1" flower – Box

**Other**

Basic Pearl Jewels (1 large)

3/8" Costal Cabana Ruffle Stretch Trim (8", 8", 3" & 3")

3/8" Baked Brown Sugar Ruffle Stretch Trim (8", 4" & 4")

Tag a Bag Gift Box (1)

Stamping Sponge

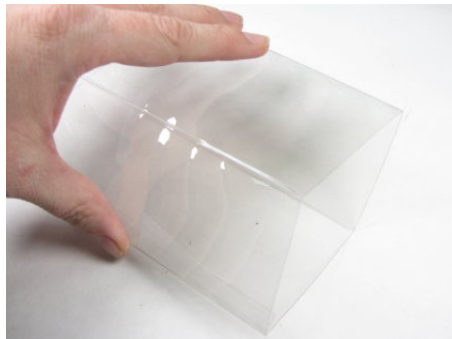
Adhesives: Glue Dots (12), Stampin' Dimensionals (3) & Sticky Strip (3")

**Non-Stampin' Up!**

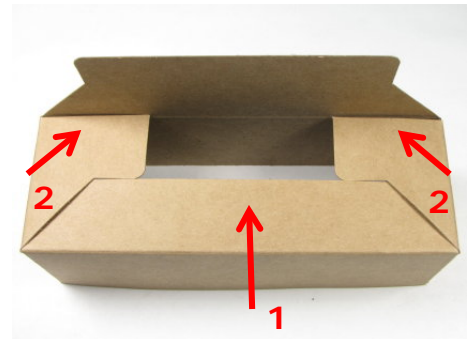
Spritz bottle with water



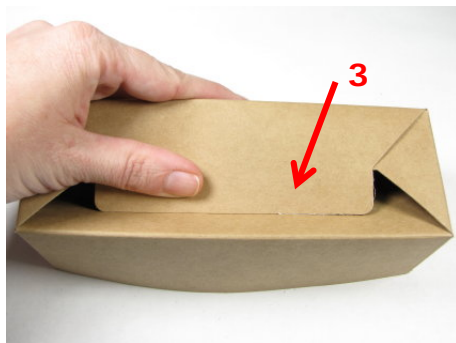
1. Gather supplies listed.



2. The acetate sleeve for the Tag a Bag Gift Box arrives folded flat. Push in at folder edges to open the sleeve and fold along the pre-scored lines.



3. Push in sides of box to open it up. Fold up the long flap with the dip in the center.  
Fold in the two short side flaps.



4. Press the long flap with the large tab down into center of box to pop tab into place.



5. The box is complete without even using adhesives!



6. Slip box into acetate sleeve.





7. Banner cut one end of the One Sheet Wonder piece. Adhere to acetate sleeve with Glue Dots.



8. Create Faux Fabric Flowers for box. Spritz die cut flowers with water. Spray enough water to make the paper shiny. Flip paper over and repeat.



9. Tightly crumple up the wet cardstock flowers.



10. Gently unfold and then re-crumple the flowers. Allow them to sit a minute so the paper dries a bit and the creases begin to hold.



11. Gently unfold flowers part way. Don't flatten out. Set flowers aside to dry completely.



12. Sponge flowers with Baked Brown Sugar ink.



13. Layer flowers and adhere together with Stampin' Dimensionals.



14. Add two pieces of Sticky Strip, each about 1" long. Place on banner about 1-1/2" from top edge of box.

Add 1" of Sticky Strip to the bottom of the acetate sleeve, where the ribbon will cover it, and opposite from the strips on the top. This will help keep the ribbon from sliding up and down.



15. Press one end of Costal Cabana Ruffled Trim onto bottom edge of one Sticky Strip piece. Wrap ribbon around the box and adhere the other end on the second Sticky Strip piece.



16. Repeat steps with Baked Brown Sugar ribbon. Place ruffle covering the flat stretch portion of the first ribbon.



17. Repeat one more time with Costal Cabana ribbon.



18. Cut two pieces of Baked Brown Sugar ribbon each 4" long. Adhere on end of each ribbon just below the layered ribbons using Glue Dots.



19. Repeat with two Costal Cabana ribbons each 3" long.



20. Adhere layered flowers over ribbon with Glue Dots and Stampin' Dimensionals.

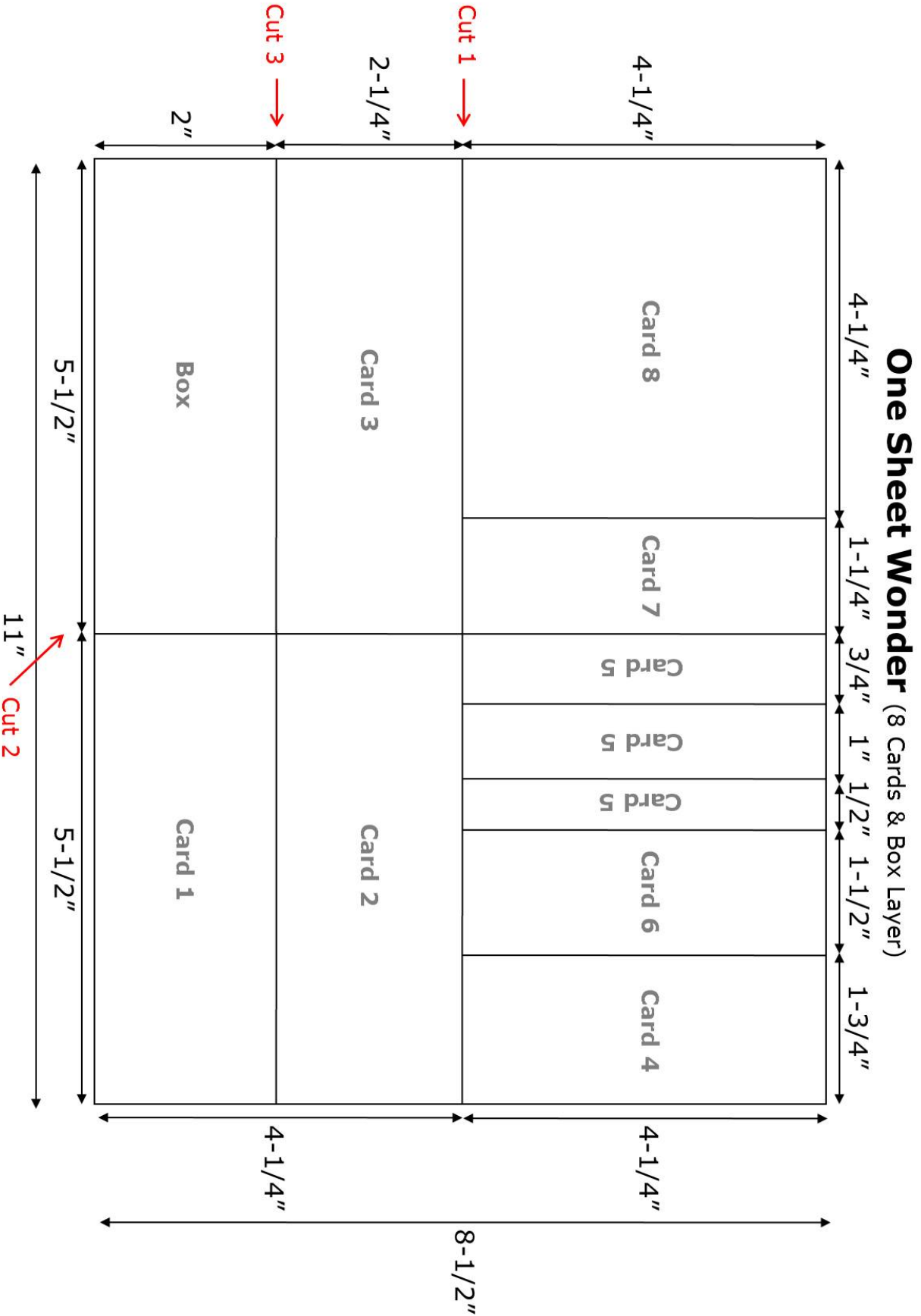


21. Add a large Pearl Jewel to the center of the 1" Crisp Cantaloupe flower.



22. Fill box with candy, cookies, small toys, office supplies, jewelry, or any other small treat.

# Templates



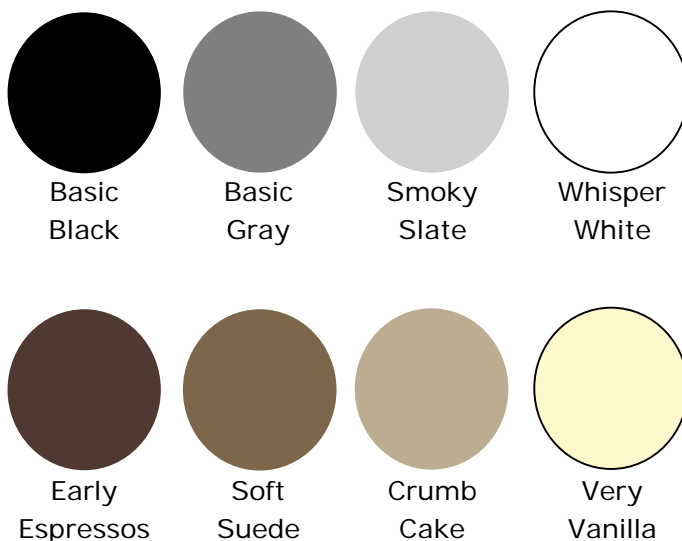
Cut on solid lines. Tear on wavy lines. Make cuts in order indicated by red arrows first.  
 This template is not to scale, use measurements to guide you.

# Bonus Ideas

Keep these instructions and have fun re-creating with new color combinations, themes, and stamp sets.

## Try these ideas or some of your own:

- **WEDDING** – Re-create the cards from this project in the wedding colors to give a personalized and thoughtful gift the new bride will love to use. Perfect for all those thank you notes to wedding party and for special gifts.
- **GIFTS** - The cards and box from the main project and alternate designs make unique and useful gifts for co-workers, friends, and family.
- **ORGANIZE** – Fill a box with these cards and you'll have cards for a variety of occasions at your fingertips. Add the Delightful Dozen stamp set (#128547 wood, #122652) and you'll be ready for even more occasions.
- **DESIGNER SERIES PAPER** – Replace the stamped One Sheet Wonder with your favorite Designer Series Paper and coordinating cardstock and inks. This fast alternative is perfect for creating lots of card sets with a variety of colors and themes!
- **SEASONAL** – Replace the Daydream Medallions stamp set used to create the One Sheet Wonder with your favorite floral, leaf, baby, or Valentine's stamp set to create a set of cards perfect for a variety of seasons. Use the In Colors from the main project or colors that coordinate with the seasonal look!
- **COLOR CHALLENGE** – Go from the trendy 2013-2015 In Colors to an elegant monochromatic look in shades of black or brown.



Lots of possibilities! ***Enjoy and keep creating!***

# Alternate Project Samples

Change the look of this One Sheet Wonder from chic elegance of the main project to bold fun with the.

These alternate samples feature fun animals from the Zoo Babies stamp set, funky circles from the Circles Framelits Collection Framelits and bright bold colors.

**Additional Supplies Used:**

**Stamps:** Zoo Babies & Delightful Dozen

**Ink:** Real Red, Tangerine Tango, Summer Starfruit, Island Indigo, Perfect Plum & Old Olive

**Cardstock:** Whisper White, Real Red, Tangerine Tango, Summer Starfruit, Island Indigo, Perfect Plum & Old Olive

**Accessories:** Circle Framelits & Brights Candy Dots

