



started with a base card of Real Red cardstock. I added a layer of Whisper White that is stamped with the Jolly Bingo Bits snowflake in Bashful Blue randomly in the background. Then I ran it thru the Big Shot with the Square Lattice Impressions Folder for some extra texture. I wrapped two pieces of the Real Red 1/8" Taffeta Ribbon around and secured in the back. The penguins I punched out the Owl with Basic Black and cut off the ears and the feet. I punched just the feet in Pumpkin Pie



Video Tutorial:  
<http://www.youtube.com/watch?v=5R8GJ3Z6drU>



The hat and the stockings on the fireplace are from the Jolly Bingo Bits stamp set and the sentiment is from the Just Believe stamp set. The logs are made with the word window punch



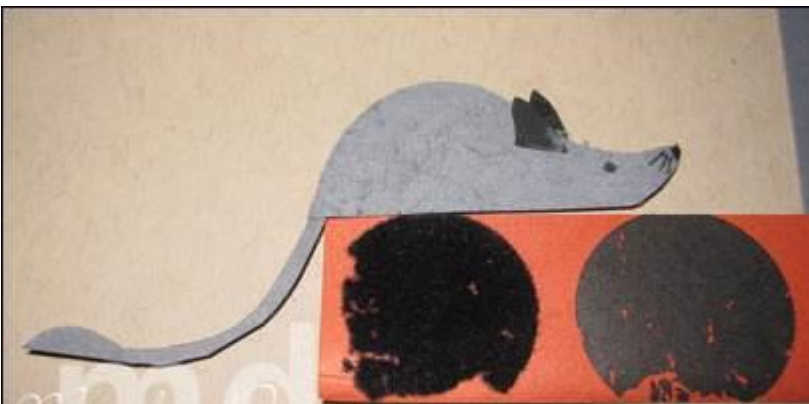




here's how I made him:  
 - 2 Step Owl Punch (use So Saffron CS)  
 - Scallop Circle Punch ( Chocolate Chip Brown for his mane)  
 - 2 Step Bird Punch (use the leaf part of the



The cat is the Owl body with the feet clipped off and glued back on a little higher to look like paws. The tail is from the branch on the Bird punch. I sponged the edges with White craft ink – added eyes, nose and whiskers.



It is also the owl punch! I need to go back and take a picture of how I cut it and add it to this post – but it is late and dark while I'm writing this so I'll add it in the morning. His tail is the branch from the Bird punch – it makes a great tail. Can you tell that my rat is fuzzy? I used my Bone Folder to break down the fibers in the card stock until I









Gremlins

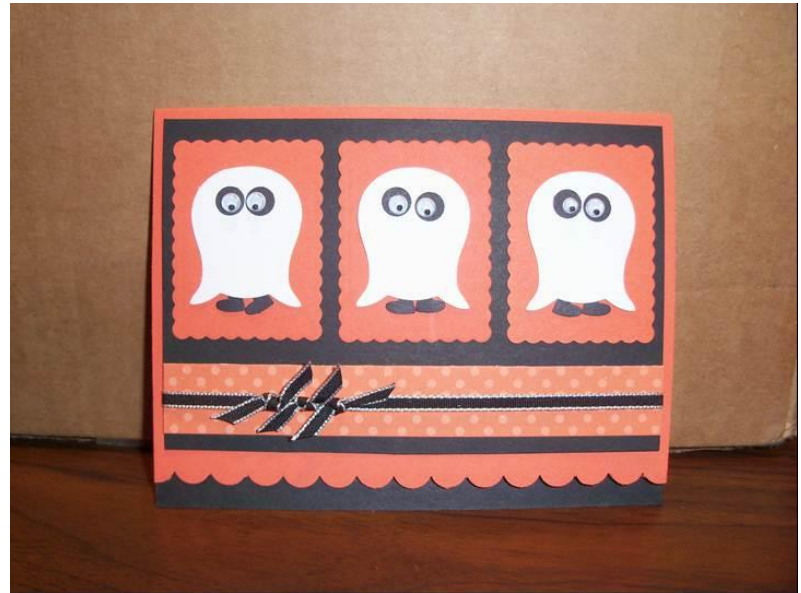
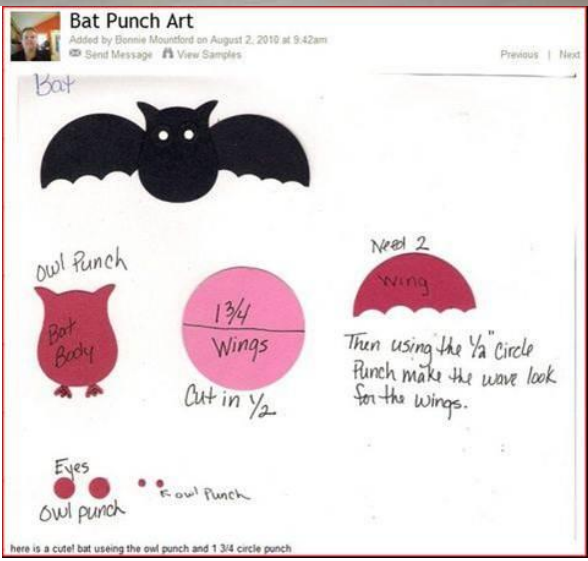


The match book is made with a piece of Crumb Cake card stock cut to 3 x 9-1/4 inches, scored at 3/4, 5 and 5-1/4 inches The DS paper used is from the retired Cast-A-Spell paper pack, I haven't gotten the new Halloween paper yet, ...

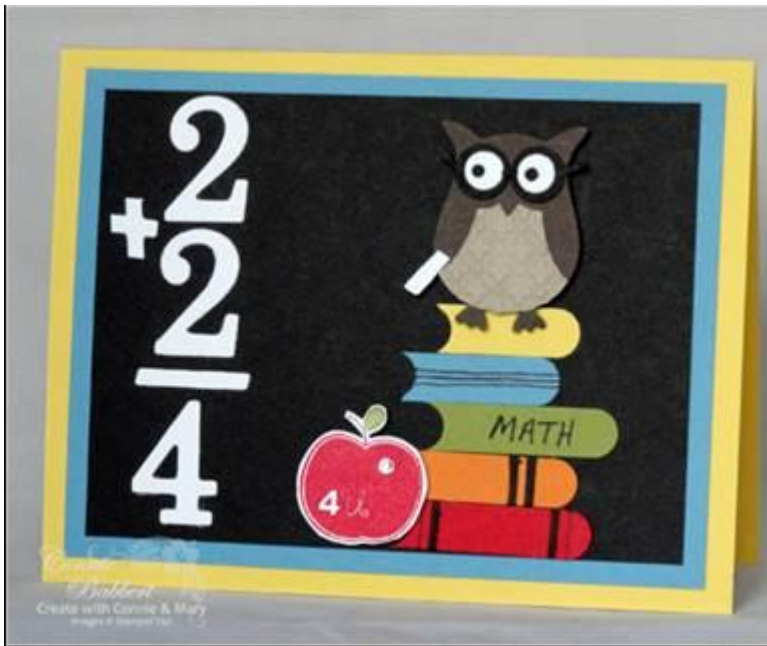


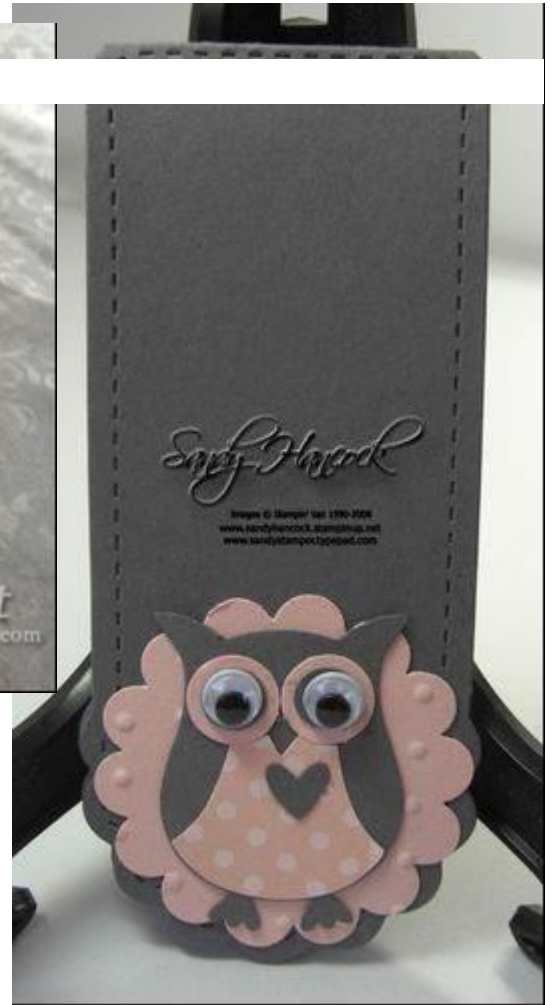


Gum Holder with belly band



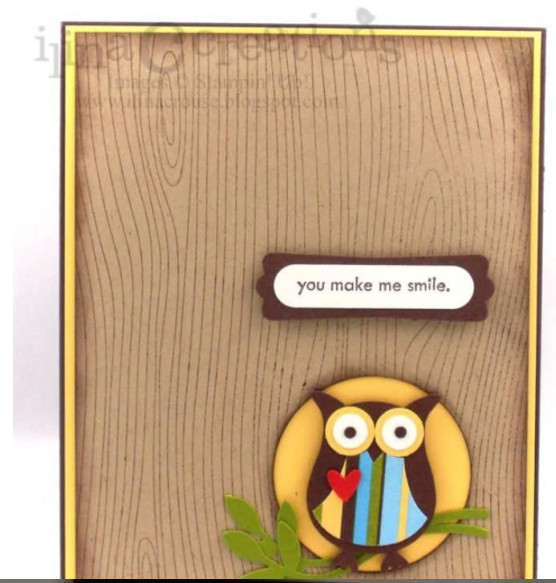
















This was inspired by the now retired stampset Viola! with the double buttons on the chef's coat. All I did was lay a small oval on the "breast" and use that edge to draw the slightly curved line (then pinch the oval). Dot on

**How I made the Baker's Hat:**  
 Use your Butterfly Punch #119848. Just cut half of the butterfly and use that side as the top and then cut the other half with the smaller piece as the hat band. I sponged the edges with "Tempting Turquoise" to give dimension.







To make Nurse Betty's Hat:  
 - Punch a Whisper White piece



- Designer Label Punch (half of it only for the Hat) Window Word Punch (cut half

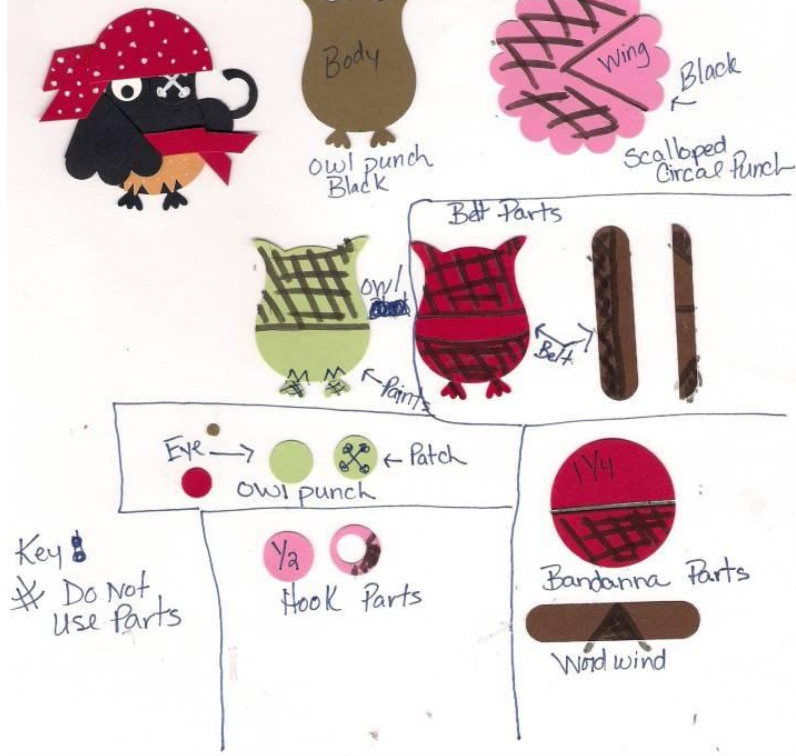








Pirate Owl. By Bonnie Mountford



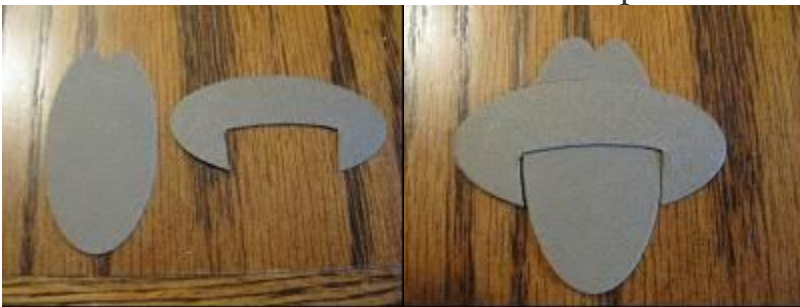




I used the Decorative Label punch to make the door in Soft Suede card stock. First I scored and inked it with a sponge. I then cut it in half and put in on another piece of paper and cut out around it with a scissors.



For the hat I used the large oval punch. I cut the little bumps into the top of one oval and cut the center section out of the other. Now the top looks like a hat when you overlap them.



I inked with a sponge and then taped the first oval to the back of my owl. The second oval I put on top with Dimensionals and two-way glue so it tips up at the brim.



The gun and star I cut freehand out of paper and the boots are just the middle sized eye circle cut

in half. The background of the card is done with the Decor roller in Soft Suede ink on River Rock card stock.







Firstly gather your supplies...you will need the Owl Punch, three colors of cardstock (you can use up your scraps on this project), some googly eyes or small circle punches, sharp paper snips, dimensionals and adhesive...

Then punch out the following shapes using your cardstock...trim the feet off of one of the black body shapes and to make the orange beak, simply position a corner of your cardstock into the top piece of the bib part of the punch...

Next take the body part that you trimmed the feet off of and layer on the white bib, the beak, the feet underneath and attach the googly eyes – if you don't have googly eyes then you can use small circle punches to make some...

To make the wings, take your other black body shape and draw a wing shape onto it – cut this out and then flip it over and use this as a guide to make your other wing...

To make the wings stand out a little, use Dimensionals to adhere your wings to the penguin...and there you have a very cute little guy that you can use to embellish many things and who is very cost effective and fun



Vicki Burdick  
www.itsastampthing-vicki.blogspot.com

I used the Greenhouse Gala DS paper and some chocolate chip and baja breeze card stock. The hearts are pear pizzazz card



Vicki Burdick  
www.itsastampthing-vicki.blogspot.com



Images © 1990 - 2010 Stampin' Up!



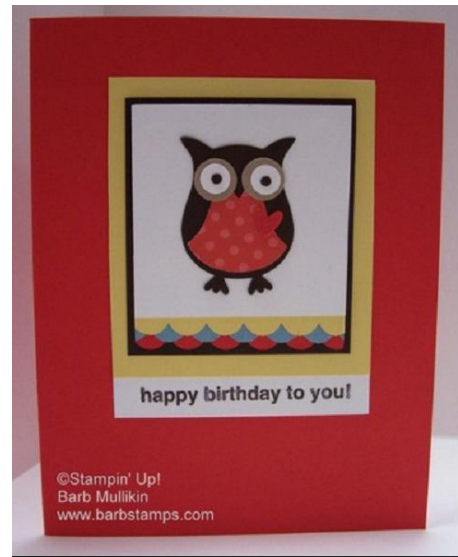




Here's a simple tulip using the new owl punch. I punched two of the owl bodies from Regal Rose and Certainly Celery, The Celery piece I trimmed from the ears to









created by  
**Kris McIntosh**  
Images © Stampin' Up!™ 1990-2009™





